

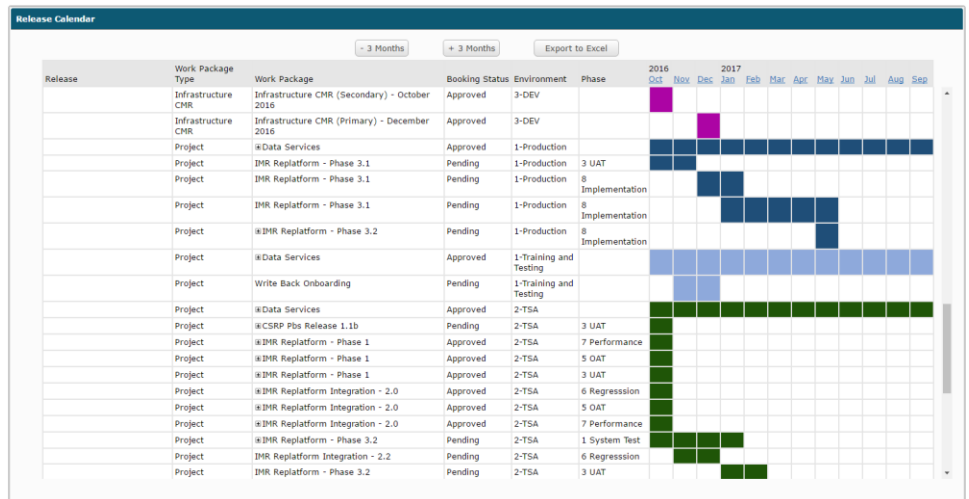


SupaRELEASE provides a release management platform for complex architectures that consist of multi-component applications and environments.

SupaRELEASE includes functions for defining Work Packages and Environment Bookings, that are used to create Deployments of System Packages to Environments. Powerful Calendars and Reports assist with identification of conflicts and overlaps between application testing and modification, to minimise the risk of unexpected impacts and delays.

Coupled with the powerful relationship features of **SupaCMDB**, dependencies between items can be visualized quickly and easily from any item.

Real-time environment calendars show all activities that are colour coded to distinguish between Pending and Approved Work Orders. Impacted vs. Tested Applications are clearly separated.



SupaRELEASE supports definition of:

- Work Packages
- Environment Bookings
- Deployments
- Entry Points
- Technology Instances
- Applications
- Deployment Points
- System Components
- Services
- Environments
- System Packages
- Locations
- People

SupaRELEASE is a 100% web-based application that can be installed on your internal network, or accessed via our secure cloud infrastructure. Visit <http://www.supatools.com> for more information and to register your interest!